



# The Messenger

(The publication of the Effort United Methodist Church for October 2011)

## Our Vision:

“The purpose of Effort United Methodist Church is to Know, Love and Serve God as a unified Christian community, inviting others to become deeply committed followers of Jesus Christ!”

---

## The Pastors Page

Dear Brothers and Sisters in Christ Jesus,

The first Sunday in October is World Communion Sunday. It reminds us, like the hymn we sang this past week says, “I am the Church, you are the Church, we are the Church together; all who follow Jesus, all around the world, yes, we’re the Church together.” And as our new GPF (Generosity, Prayer and Faith) ministry leader, Bob Decker, pointed out, we all have unique strengths and gifts that God has given to each local church. Even the interviewers for our CLIMB Stewardship program were convinced that Effort has many strengths and a strong ministry to the community.

We will be celebrating some of our unique strengths and ministries this month. On Sunday, October 16th, World Food Day, we will be celebrating the ministry of the SFRC (Supplemental Food Resource Center), which we commonly call our Food Pantry. On Sunday, October 30th, we will be celebrating the outreach of our Prayer Shawl ministry. On these Sundays you will get to see firsthand how these ministries you support have impacted the lives of individuals.

Effort church is also reaching out beyond our borders. We are collecting items for flood buckets for those affected by the recent hurricanes. There’s still time to contribute and assist our neighbors close by. Through the leadership of Greg and Lisa Magill, we are sponsoring a VIM (Volunteer in Mission) Trip to Joplin, Missouri in February. You may wonder, “Why go all the way to Missouri, when we have flood victims right next door?” It’s a legitimate question. The VIM teams that go to disaster areas only go after an area has been deemed safe for workers to enter and VIM teams only go where they are invited. This insures that an area is able to handle the teams and to give them specific jobs which will truly be of benefit to a community.

The Youth will also be going to New York on another REACH mission trip next summer and they will certainly be in need of adults to accompany them. If you have never been on a mission trip, I encourage you to look into one of these possibilities. You will never be the same! It was through mission trips to the Dominican Republic, Guyana and Egypt that I heard the call to full-time Christian ministry. If we weren’t going to Joplin, Missouri this year, I would be joining a VIM team I’ve joined before that is going to Puerto Rico. Jesus said, “Go into all the world and preach the Gospel...” and as a plaque I was given at my ordination says, “Preach the Gospel at all times. If necessary, use words.” Mission work is a great way to share the Good News of Jesus’ love for others in practical ways, that impact not only those who are served, but those who serve as well.

It’s all about proclaiming Jesus and it’s all about loving one another, whether it’s within the walls of Effort Church, in the West End community or “to the ends of the earth.”

Knowing, loving and serving Christ wherever we are planted,

Robin

THE 2012 CONFIRMATION CLASS IS FORMING: If you know a young person in 6<sup>th</sup> grade or above who is ready for Confirmation into the faith please let Pastor Robin know or call the church office at 570-629-1890.

The "*JOYFUL NOISE*" of October!!  
A full bucket IS a joyful noise!  
(and we will be sharing our joy with...)

Oct 2 – World Service Fund

Oct 9 & 16 – Thanksgiving Dinner (This dinner is served family style on Thanksgiving Day to anyone who wishes to join us at no cost, no matter what the situation, just a time to not be alone)

Oct 23 & 30 – SFRC to help with holiday baskets

### WE HAVE SOME WEST END FAIR WINNERS!!!

Lucille Smith has entered into the fair for the last 20 years. This year she received 2 first places and 3 second places.

Lindsey Edwards entered for the first time this year: 3rd place – sun catcher, 3rd place – lego house self designed, 4th place – color animal digital picture (was of our choc lab who passed away 2 days before fair started)

Reta Romaco – 1st place – boy afgan, 1st place – baby sweater set, 2nd place – sweater 2nd place – prayer shawl

Ruth Flechsig Entered 3 paintings and won 2 first place Blue Ribbons and 1 second place ribbon.

CONGRATULATIONS TO YOU ALL!

Just a little Giggle....

An exasperated mother, whose son was always getting into mischief, finally asked him, "How do you expect to get into Heaven?"

The boy thought it over and said,

"Well, I'll just run in and out and in and out and keep slamming the door until St. Peter says '**For Heaven's sake, Jimmy, come in or stay out!**'"



**EUMC Treasurers Report:** The local Year to date church deficit grew through July to -\$13,212. Offerings reflect summer, but missing was the last Sunday in August due to the hurricane. July/August also included the unusual expense of purchasing heating oil (%5000.00) Since we started the year in financial challenge we have been unable to catch up and so insurances and pastor benefits to the conference remain unpaid due to lack of funds and certain local bills continue to be paid late.

\*\*\* This year July had 5 Sundays, where as last year August had 5. Our offerings combined for this July/August were \$5200.00 lower than last year. Remembering that one Sunday was missed due to the hurricane. The first Sunday in Septembers offerings were higher than usual but not double. Over the 8 months of **this year the offerings are \$19,151.00 lower than last year.**

\*\*\*The Preschool finances are reflecting initial tuition receipts for the new school year, but the payroll expense has not yet started. Based on a “school year” the Preschool was a net positive of \$1205.00.

\*\*\* the day care is struggling with lower tuition intake and higher personnel costs. The personnel costs were being addressed in July 2011, yet **the year to date deficit of - 9095.00.** This will be extremely difficult to reverse by the end of this year. (Dec 31<sup>st</sup> 2011)

\*\*\*The “Special Funds” remain fully funded.

\*\*\*The year to date **total of unpaid insurances and pastor benefits to the conference is \$21, 477.00**

\*\*\*Not reflected in our financial statements are the countless hours of service provided by volunteers and committee members. The value of their service is beyond measure and we extend our deepest thanks to them.

**If you have any questions please feel free to speak to me in person or email me at [JeffBuck@FaithAndFamily.biz](mailto:JeffBuck@FaithAndFamily.biz)**

Jeff Buck  
Treasurer

**Please check the bulletin board in the Narthex for the full financial report for the month!**

*Prayer for contentment: Lord, help me to be grateful for what I have, to remember that I don't need most of what I want, and that JOY is found in simplicity and generosity.*

# MINISTRY, MISSIONS & OPPORTUNITIES TO SERVE!

(Many hands make light work and bring Joy to others!)

Serve wholeheartedly, as if you were serving the Lord, not men.

Ephesians 6:7

## <<<PRAYERFULLY CONSIDER THESE LEADERSHIP POSITIONS AT EUMC>>>

Listed below are the various leadership positions that are available to be filled at this year's Charge Conference which will be held on November 20, 2011. A brief description of each office is also included. If you would like to be considered for one or more of these positions, please complete the bottom portion of this form and return to one of the members of the Nominations and Leadership Committee.

**Trustees:** Oversees and maintains all local church property; receive and administer gifts made to the congregation; responsible for, in conjunction with the pastor, use of the church buildings and grounds; ensure that adequate insurance coverage is maintained; prepare a budget of the maintenance and improvement needs to Finance Committee and be the administrator of the Articles of Incorporation.

**Staff-Parish Relations Committee:** Educating and reminding both staff and the congregation to focus on working together toward the mission of the church by promoting unity and encouraging, strengthening, nurturing, supporting, and respecting the pastor(s), staff and their families; engage in conversations between the congregation and the SPR about ministry direction, including staff position recommendations to carry out the work of the church; assessing job performance of the staff/pastor at least annually for the purpose of realigning staff position descriptions with the mission of the church; conferring and consulting with the district superintendent; supporting continuing education for the pastors and staff; identifying and supporting individuals from the congregation whom God seems to be calling for ordained ministry. Much of the work of this committee is confidential with respect to the personnel issues.

**Committee on Finance** - Charged with the responsibility for developing and implementing plans which will raise sufficient income to meet the budget adopted by the Administrative Council Board. It shall administer the funds received according to instructions from the Administrative Board. Shall compile annually a complete budget for the local church and submit it to the Administrative Council Board for review and adoption.

**Administrative Council Board** - The Administrative Board shall provide for the planning and implementing of a program of nurture, outreach, witness and resources in the local church, and for the administration of its organizational and temporal life. It shall evaluate church programs, set goals for the church and develop strategies and plans of action for implementing its ministries.

**Committee on Nominations and Leadership Development** - The charge of this committee is to identify, develop, deploy, evaluate and monitor Christian spiritual leadership from the local congregation. It shall recommend to the Charge Conference the names of people to serve as officers and leaders of designated ministries.

**Memorial Committee** - The Memorial Committee is to recommend policy to the Administrative Council Board on memorial gifts, prepare an inventory of potential memorial projects (gifts) and supervise the reception and disbursement of all memorial gifts to the church.

Simply cut this form out and return to the church!

---

Name \_\_\_\_\_ Phone \_\_\_\_\_

Email \_\_\_\_\_

Committee which interested in:

---

—

All forms must be returned by October 2nd in order for the Nominations and Leadership Committee to do its work in a timely manner. Thank you. Ann Marie Klemm, Lisa Hoffman, Darlene Thompson, Susan Yetter, Dee Juris, Eli Serlenga, Sue Johnson and John Wolfe.

BELOW YOU WILL FIND OUR PRESENT TEAMLEADERS. PLEASE FIND A MOMENT TO THANKFULLY PRAY FOR THEM AND FOR THEIR SERVICE TO EUMC!

Admin. Assistant: Wendy Edwards  
Administrative Council: Ken Edwards  
Lay Leader: Steve Johnson  
Lay Delegate: Bob Decker  
Newsletter: Cathy Wells  
Website Design Ministry: Aaron Boligitz  
Choir: Dan Smale  
Children's Choir: Sarah Molen  
Praise Team: Greg Magill  
Education: Lynn Foster  
VBS: Deborah Audett  
Youth: Ken Edwards  
Food Pantry: Karen D'Arcy  
Trustees: Marv Aylsworth  
Tech Team: Rocky Johnson

Finance: Robert Argot  
Missions: Pat Mackes  
Preschool: Gail Regina  
Day Care: Karina Loffio  
UMW: Kay Charbonnier  
Cultivating Generosity: Bob Decker  
St. Nick: Don Ernst  
Prayer Shawl: Mert Wolfe  
Grief Share: Jan Decker  
Seekers: Don Bonnet  
Marriage Class: Tammy Heistand  
Prayer Garden: Julie Foley  
Thanksgiving Dinner: Ken Edwards  
Pastoral Care Team: Dee Juris  
GPF ministry: Bob Decker

**ATTENTION! ATTENTION! LEARN ALL ABOUT IT!**

We are announcing a brand new ministry!!!

Grounded in Generosity, Prayer and Faith (GPF) Ministry

Headed by our own Bob Decker. Please contact Bob at 570-688-9222 or at [Bob.Decker@maines.net](mailto:Bob.Decker@maines.net) if you are interested in being part of this exciting ministry team!

## UP COMING MISSION TRIP

**WHO:** You!

**WHAT:** Mission trip

**WHEN:** February 18 - 26, 2012

**WHERE:** Joplin, Missouri

**WHY:** Help in recovery efforts for the EF-5 tornado they experienced on May 22, 2011.

Greg and Lisa Magill are in the planning stages for a VIM (Volunteers In Mission) team from EUMC to travel to Joplin Missouri to help with recovery efforts for the EF-5 tornado they were crushed by on May 22<sup>nd</sup> 2011. The proposed dates for the trip are February 18-26<sup>th</sup> 2012. Travel time is approximately 19 hours one way without breaks. (two full days of travel on either end of the trip will be expected) Rough figures for cost will be around \$450-\$500. At this time it is expected that we would be a rebuilding/reconstruction team but this can change as we are still 6 months away. If interested or would like more information please contact Greg or Lisa at 570-722-0657

**NEEDED: American Cancer Society Needs Drivers** – The American Cancer Society's Monroe Unit is in need of volunteers to drive cancer patients to treatment Monday through Friday, mornings and afternoons. Volunteers may use their own vehicle or one of the ACS vehicles. Training is provided. For more information on how to become a volunteer drive, please **contact Lyndsey at 570-562-9749 ext 340 or [lyndsey.cumello@cancer.org](mailto:lyndsey.cumello@cancer.org)**

**WANTED: Persons to serve on the Cemetery Board.** We are in need of three dedicated people to represent EUMC on the Board of the cemetery on the corner of Merwinsburg and Pheasant Run Road. The Board President, John Burrus will be stepping down and will need to be replaced along with two other members. A background in landscaping or similar training is encouraged but we ask that anyone who is interested to prayerfully consider serving in this ministry. If you are interested and able to serve **please call Pastor Robin at 570-629-1890**

### **From the Prayer Shawl Ministry.....**

**We are frequently asked if people who can not make the meetings but can crochet, knit, & sew can help us.....You Can! Just make your donation and place it in the basket below Our sign in the Narthex or call Mert Wolfe at 610-681-6419 and we will be glad to come and pick them up from you.**

The general sizing for the Rectangle shawl is 20 or more inches wide by 60 inches long. For the triangular, the sizing is 36 inches deep, the measurement from the neck side to the point. We are always looking for "Angles" and you can be one by making one for us. We encourage you to use your own patterns because God made us all as individuals so the shawls should be individual as well. If you can not work without a pattern please contact me and I will be glad to send you a few easy ones. There can be more to a shawl than praying and making one.

**Prayer Shawl Ministry information can be found in the Narthex of the Church, check it out!**

*Any one with nimble or not so nimble knitting or crocheting fingers is welcome to participate in this ministry of prayerful love. And if you know someone who could use a prayer shawl please let us know!*



## THE GARDEN OF GIVING

**(Located off route 715 4 miles from WAWA in McMichaels Hillside Terrace on the right Hillside drive)**

“The Garden of Giving” has a desperate need of a tractor! Our second **fundraiser is scheduled for October 3<sup>rd</sup> and it is a golf outing at Shawnee**, hosted by EWGA. The cost is \$85.00/person and it will begin with a shot gun start. What great fun is that!? The cost includes 18 holes, cart, snack and prizes. (of course there are prizez!) There is space for only 100 players so sign up now to secure your spot for this fun filled fund raiser. To do so contact **Dian Fitzpatric at 980-625-9222 or myself (Tammy Graeber) at 570-402-1282** and we’ll answer any questions you may have and then pencil you in! ;-)

By Gods abundant grace and blessing we have been able to serve the PVEN, SFRC, STROUDSBURG WESELYN CHURCH FOOD BANK, ST. LUKES SOUP KITCHEN, OASIS OF LOVE, POCONO MT. ECUMENICAL HUNGER MINISTRY, Weekly, Bi weekly and monthly.  
Tammy Graeber



**The Ministry Of Helping Hands:** Helping Hands is a local mission project sponsored by the Mission Team of the church. We help with chores that are getting more difficult to do or ones that you could use a little help doing. The tasks could be washing windows, cleaning gutters, changing storm windows for screens, helping clean closets even cleaning up the limbs from the ice storms. Volunteers are also welcome to join and share their talents God has blessed them with. God calls us to use all our hands in mission and ministry. For more information please call Joyce or Marv Aylsworth at 570-643-3334

**NEW PROJECT:** We are planning a date to set the posts to keep the buses out of the grass at the end of the pavilion. If people are interested in helping, let Marve Aylsworth know (570-643-3334)



*Supplemental Food Resource Center*  
AKA- SFRC

“Feeding those in need in the West End region of the Poconos”

A Ministry sponsored by EUMC

This ministry is an outreach serving the communities of Effort, Gilbert, Kunkletown, Kresgeville, Brodheadsville, Saylorsburg, Sciota and Albrightsville. The Lord inspired us to help feed families going through emergency or other short term situations who are not eligible for local, county or state programs and is limited to an 8 week duration per family. We require a valid drivers license or state ID with address proving residency in the West End. Our **hours of distribution are EVERY SATURDAY 10am -12 noon** and we are located at the Effort UMC Merwinsburg RD, Effort PA 18330

**\*\*\*We are always in need of volunteers, monetary donations, food donations and drivers for food pick up\*\*\***

**TECH TEAM MINISTRY**

Anyone interested in participating in this very vital and growing ministry please see or contact Rocky Johnson in the “Tech Cave” or at 570-619-5483 or at eumctech@gmail.com



**United  
Methodist  
Women**

**An explanation of the emblem:** The Official emblem of the United Methodist Church combines the cross and a flame symbolizing The Holy Spirit. The emblem for the United Methodist Women likewise includes the cross and a flame. Both are ancient symbols of the church dating back to the days of Christ and Pentecost. Each evokes images of witness, sacrifice and service. They remind us of both the opportunity and the obligations of discipleship. Paul’s ancient words to Timothy have fresh and contemporary meaning: “I now remind you to stir into flame the gift of God which is within you.” (II Timothy 1-6a-NEB)

As part of the emblem for the UMW these symbols remind us of our purpose of helping women to grow in their understanding of and willingness to participate in the mission of the church. These also remind us of our heritage of women who pioneered in service for the church at home and abroad and in organizing women for mission service and support in many areas of need. The shape of the emblem is likewise symbolic. It is fluid and free flowing, suggesting change and mobility. As organized groups of women this has been our heritage. Often at the forefront of movements for change, at times supporting projects initiated by others, we strive to be aware of the times and to move with events rather than to be overwhelmed by them.

The cross, the flame and the individual with her abilities and opportunities--- all are elements of a vibrant contemporary movement for United Methodist Women.

(Women’s Division - The General Board of Global Ministries - The United Methodist Church 03/2002)

## **An Invitation to the Women of Effort United Methodist Church**

The United Methodist Women (UMW) of EUMC meetings are the second Monday of every month in Wesley Hall at 7:00 pm. We would love to have you join us at our October 10th meeting. The program that evening is Cheer Baskets. We collect items to bring sunshine into the lives of those who are unable to attend church. These items can be anything from toiletries to note cards and small gifts. All UMW meetings are opened with devotions and end with a time of refreshments and fellowship.

The Purpose of the UMW is to know God, to experience freedom as whole persons through Jesus Christ, to develop a creative, supportive fellowship, and to expand concepts of mission through participation in global ministries of the church. Our UMW certainly lives up to their purpose by reaching out and serving our Lord and Savior in many ways. This year they donated funds to St. Nick Project, VBS, Youth Mission Trip, the Supplemental Food Resource Center, the Pastor's Discretionary Fund, the Mission Outreach Auction, Memorial Gifts, Book Bag Kits for Local Children and NE District UMW Missions.

Our UMW 2011 officers are: President – Kay Charbonnier, Vice President & Fundraising Ch. – Joyce Aylsworth, Secretary – Jan Decker, Treasurer – Dee Juris, Sunshine Ch. – Lorraine Altemose, Reading Ch. – Rosalie Juris

Saturday, September 24th, our UMW was hostess to the NE District Annual Meeting and Ingathering. It was a time of worship and fellowship with ladies from many churches in our district. Items were collected that day for women and children in need.

Our UMW also enjoys a time of fun and fellowship. We sponsored a Social Tea Party in June, a Church Picnic in August, and on Monday, December 12th we'll have our annual Christmas Dinner. We urge you to become a member of our UMW. It's a wonderful group of Christian Women who support each other, our church, and our community.

\*\*\*Also the Ingathering of the UMW on September 24<sup>th</sup> was a huge success! There were 54 women in attendance and 14 of them were from EUMC!!! The speaker was awesome and it was a great spiritual time for all.

**\*\*\**For our upcoming UMW events see "Mark Your Calendar"!*\*\*\***



Mark your calendar for these special events!

Sunday October 2<sup>nd</sup> is our **YUMMY Trustee breakfast!!** It runs from 9am - 10:30 am. Come after 8:30 service or before 11:00 and enjoy the food and fellowship with your church family! Friends and family always welcome so bring some one new along!

**Saturday October 22<sup>nd</sup>** will be the fall work day beginning at 9am. If you have a body, hands, feet, a rake and a shovel... you are cordially invited to come along and help get the church ready for the winter! (Yup we said winter!) Come on out and enjoy the fun and fellowship of working together on our wonderful church.

### **SPECIAL CELEBRATION EVENTS!!**

**we will be celebrating two ministries in October:**

**October 16<sup>th</sup>** on World Food Day, We will be celebrating the Food Pantry, with a special thank you presentation from "Helping Hands and Beyond."

**October 30<sup>th</sup>** The Prayer Shawl Ministry with someone who received a prayer shawl sharing his/her story.

**Sunday October 23<sup>rd</sup>** the Fall "Council of Ministries" meeting of all ministry leaders will follow the 11am worship service. Please bring a covered dish for the luncheon if you plan to attend.

#### A NOTE TO MINISTRY TEAM MEMBERS:

\*\*\*\*\*(Dear Ministry Team Members,

As the current leader of a Ministry Team, we ask that you attend the Council on Ministries meeting that will be held on Sunday, October 23<sup>rd</sup> after the 11 am worship service. This meeting will begin with a covered dish luncheon. Please bring a main dish, a side dish or a dessert to share. There should be approximately 25 people attending.

At this meeting, we would like you to share your groups' schedule and agenda through the fall and winter of 2011/2012. Please bring your calendars. It is in sharing what you are currently doing, and what you plan to do in the near future that will give all the leaders of all groups an opportunity to know what other groups are doing and perhaps combine some ministry efforts. Please come prepared to share about your group.

If you cannot attend on October 23<sup>rd</sup>, please send someone from your group to be the spokesperson for that day. It is important that all groups are represented. Also, if you have more than one leader in your group, please designate at least one leader to attend, although all leaders are welcome. It is my hope to have this group of leaders meet at least twice a year to share past, present and future goals.

Please be in prayer that this leadership group will help tie ministries together, build fellowship between leaders and greatly help in communication within the church.

Joy and peace,

Pastor Robin)\*\*\*\*

## United Methodist Women Upcoming Activities -

### October 10<sup>th</sup> 7pm Wesley Hall

Cheer Baskets will be filled and distributed. Members – please bring baskets (if you have any you can spare) snacks, crossword books, devotional items, non-medical sundries to fill the baskets. If you know someone that could use a cheer basket let us know.

### NOVEMBER 5<sup>th</sup> 2011 COME AND GET IT!!! "ALL-YOU-CAN-EAT" 9th ANNUAL PORK & SAUERKRAUT DINNER

Bring your appetite & dine with us. Our "9th Annual "All-You-Can-Eat" Pork & Sauerkraut Dinner will be held on **November 5th, 3:00pm - 7:00pm**, Effort United Methodist Church, Merwinsburg Rd., Effort. **Adults: \$9.00, Children 5-12: \$5.00, Children 4 & under: FREE.** Menu includes: "Loin of Pork", Home-Made Gravy, Sauerkraut, Mash Potatoes, Green Beans, Apple Sauce, Rolls w/butter, Home-Made Pies & Cakes, Coffee, Tea & other beverages. Take-Outs available. Wheelchair accessible w/elevator.

We also have: Home-Made "SAUSAGE & SPINACH SOUP" for TAKE-OUT ONLY. \$5.00 a quart

We would like to welcome any and every new customer. Sit & chat with us. We are a friendly bunch. We would also like to give a big THANK YOU to our previous customers for making our past dinners such a great success.



**Christmas Cantata dates** -- (It'll be here, it'll be here, before you know... you have to read that like you'd sing Let it snow, let it snow, let it snow... now read it again, you know you want to....)

Friday, December 16<sup>th</sup> -- St. Matthew's UCC, Kunkletown @ 7:30PM

Saturday, December 17<sup>th</sup> -- Effort United Methodist Church @ 7:30PM

Sunday, December 18<sup>th</sup> -- Our Lady Queen of Peace, Brodheadsville @ 3:00PM

**YOU WILL NOT WANT TO MISS IT!**

## POCONO PANDAS ANNOUNCEMENTS

(Prayer Acceptance Nurturing Develops Awesome Spirit)

Friday October 7th – Youth Group at 7pm-9pm

Friday, Oct 21 – Trunk and Treating Halloween Party 7pm-9pm Bring a friend will ya!

### YOUTH GROUP FUNDRAISER!

The EUMC Youth group is selling Calendars as a fund raiser for their mission trip next summer. A sample is hanging on the bulletin board in the narthex and the cost is only \$6.00. Please stop in the office and see Wendy Edwards to purchase! They will be on sale until we run out! And THANK YOU in advance for supporting our great youth group!

**SATURDAY EVENING WORSHIP! Is 5:00 pm every Saturday at EUMC!**



**Music Notes**



( Please come for these toe tapping, ear tickling, hands clapping, spirit lifting, voices raising, Jesus praising events!)

**The Praise Band - October 23rd at 0830 and 11:00 am** Will be leading the worship with more of those wonderful and uplifting praise songs! The band is always looking for new PIPS! (Participating In Praise Singers) So if you are feeling moved to “PIP” it up, or even have some song suggestions please contact Greg Magil ([gsmagill@ptd.net](mailto:gsmagill@ptd.net)) or 570-722-0657 or just come to rehearsal for heavens sakes! Wednesday October 19<sup>th</sup> 8:15 pm and Saturday October 22<sup>nd</sup> 7:30pm in the sanctuary.

## ***THE EUMC CHOIR***

Our regular choir season is in full swing and even if you missed the first few rehearsals and would like to join choir please see Dan or any choir member for more information. (our web site is given below)

**CHRISTMAS IS IN THE AIR!** Can you believe it? We have begun rehearsing for the Christmas cantata!! If you are interested in being a part of the Christmas cantata this year please let Dan know by mid- as soon as possible so we can order the correct amount of music books. It saves on shipping costs if we can order everything at one time. (Dates for the Cantata are in the "Mark Your Calendar" section of this newsletter)

Busy schedule but you'd like to sing? Considering joining us once a month to help with the praise band songs. We have had a lot of fun as a small group backing up the vocals for the praise band. It would be great to have a few new faces to join us. We rehearse two times the week before any given praise band Sunday, Wednesday evenings after regular choir rehearsal (approximately 8:15PM) and Saturday evening after the service (approximately 7:30).

**WEBSITE:** *If you want to see what the choir is up to, or access our rehearsal calendar please visit our website at <http://churchchoir.info>*

**CONTACT:** *Dan Smale -- [daniel.smale@me.com](mailto:daniel.smale@me.com) -- (570) 350-5668*

**The Children's Choir:** Will be singing in the October 2<sup>nd</sup> service! Normal rehearsal time for them is 10:15 am each Sunday. (under the direction of Sarah Molen). All children ages 3-fifth grade are welcome to join in and sing for the Lord! Please call the church office to register at 570-629-1890

(Bring friends, family, neighbors, & any one else you can think of who might enjoy our music ministries! )

Music is one of the best ways to speak to and from the soul!



CONTRIBUTED PHOTO

This beautification project at the routes 115 and 209 triangle in Brodheadsville won the General Federation of Women's Club international award.

## Effort woman wins international photo award

Pat Mackes of Effort entered a photograph in the General Federation of Women's Club-Western Pocono Women's Club Annual Arts and Crafts contest in March and won in the category of GPWC Volunteers in Action.

Her photo won first place at her club level, then entered and won first place at the county, northeastern district level, state and finally at the International level.

At the international level, Mackes competed with all GPWC clubs in the United States as well as internationally. Her picture depicted the club's flower gardens at the routes 115/209 trian-

gle in Brodheadsville.

She recently received certificates and a monetary award, as well as having her picture included in the new General Federation of Women's Club brochure distributed to all clubs nationwide.

The award was presented by Andrea Hauck, Chairwoman for the Arts-Monroe County level at the Western Pocono Women's Club August membership meeting.

Mackes is the general chairperson of the Community Improvement Project: the flower gardens. The garden, sponsored by the club, is an Adept and Beautify Project from Penn-

sylvania Department of Transportation in 2002. She and her committee spend many hours beautifying the travelers' entrance into Brodheadsville.

Membership in the Western Pocono Women's Club is open to women 18 years and older seeking to help their community. Members have the opportunity to develop leadership skills, exchange ideas, and form lifelong friendships.

Visit [www.westernpoconowomensclub.org](http://www.westernpoconowomensclub.org) for details about the club and about the scholarships. If you have any questions about this club feel free to e-mail them at [wpwomensclub@gmail.com](mailto:wpwomensclub@gmail.com).

**Congratulations Pat Mackes!!! WHOOP! WHOOP!**



Please be in daily prayer for:



Jeff Horton  
Barbara Jentink  
Sue Daube  
Cindy Johnson  
Zondra Belstera  
Don Nydam &  
family  
Tayte Belstra  
David Charbonnier  
Jr.  
Melissa D'Arcy  
Marge Milasch  
John Romanco  
Jenna Kinsler  
Nicole McKinney

Amos Belnavis  
Millie Pall  
Joan Burger  
Gene Hamilton  
Leha Wimpfheimer  
Dan Dibblee  
Alice Groman  
Linda Gensel  
Poppy Williams  
Phyllis Rogers  
Veroncia  
Weisenmuller  
Danica Mead  
Karen Balentine  
Arlene Burger

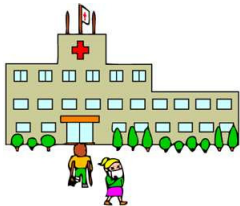
Donna Deluzio  
Susan Arzberger  
Elaine & Steve  
Dowd  
Ethel Michael  
Gary Whiffen  
Julie Cresina  
Josie Kise  
Stacey Fina  
Baby Lorelai,  
Mother-Sara,  
Grandmother-Kate  
Matthew Wells  
Christian Michael  
Savage

Dylan Weis & family  
All the missions and  
ministries of EUMC  
Sue Johnson  
Paul Smith  
Nicole Lindaberry  
Wolfgang Gerhardt  
Camille Desando  
Millie Hanby  
Jeff Minnich  
Ethel Weiss  
Lee Hoffman



Please keep the following service men & women in your daily prayers

Major Earl Evans, Master Sgt. Kevin Mead - USAF/Germany,  
Maj. Howard Hiestand - US Army,  
Cpt. Ed Caudell-US Army/Fort Braggs,  
LCPL Brian Everett-USMC Beaufort, SC,  
Sgt. Justin Hillman-US Army/Afghanistan,  
Spec. Sam Michlavsky-US Army/Afghanistan,  
Cpt. Mark Crimaldi-7th Army/Germany,  
Spec. Dean Altemose II-US Army/Germany,  
Capt. Scott Thomspson-USAF/Mountain Air Force Base, Idaho



Please keep the following in your prayers as they are in care homes, nursing homes or rehabilitation centers. You can send cards, letters or even pay them a visit if the Lord leads you to do so.

Lillian Ortolan - Getz Personal Care Home;  
Nancy Hiestand - Mahoney Valley Nursing Home;  
Jim Yetter - Chandler Estates, Wind Gap;  
Esther Tucker - Brookmont Nursing home;  
Mildred Pall - Wesley Village, Pittston.



## Card Showers:

We are having a card shower for the following folks this month. Please send them a little note to bring them some company and cheer.

**Bob and Adele Argot** - Loss of Adele's sister  
**RR 2 Bos 2290**  
**Saylorsburg PA, 18353**

**Wolfgang Gerhard** - health issues  
**11 Bear Medicine Road**  
**Effort Pa, 18330**

**Wes and Jan Poorman**- are moving  
**1124 Kirkland Village Circle**  
**Bethlehem PA 19017**  
**610-691-4878**  
**[janwes@kirklandvillage.org](mailto:janwes@kirklandvillage.org)**

**Rosalie and family**-are suffering great loss  
**PO Box 132**  
**Effort PA 18330**

**Gene Hamilton** -is fighting illness  
**101 Pine street**  
**Kunkletown PA 18058**



Happy Birthday Blessings to you!



- 10/01 Andrea Johnson, Dale Brown, Dickson borger, Mackenzie Borger  
10/02 Bill Bishop, David Korenski, Rebecca Felker, Sarah Nasto, Justin Heimbach,  
Alexander Fuller  
10/03 Marjorie Hiller, Dana West, Leroy Bonsor III, Matthew Daubert  
10/04 Christine Wagner, Kelly O'Donel, Kelly Mundy, Emily Savitz, Keila Lubenetski,  
Austin Fronheiser  
10/05 Florence Frantz, Ethel Zipp, Colville Brown, LeeAnn Nasto, Maria Biery  
10/06 Gina Bellis, Sarah Johnson, Ashanti Johnson, Ariana Cox  
10/07 Susan Shaw, Rich Pierson, Susan Shupp, Robin Caruso, Bobby Snyder, Meghan Grant  
10/09 Dolores Juris, Rachel Hazen, Tyler Horton, Tyler VanDerheyden  
10/10 Carla Smith, Time Beiry, Brett Churchill  
10/11 Richard Schellman, Debra Bishop, Haley Toth  
10/12 Bill Hoffman, Jennifer Zorn, Kyle Baumann, Tina Ackerman, Megan Wasdyke, Rachel Gower  
10/13 Cindy Cameron, Paul Jago, Brittany Bailey, Corynne Bailey, Matthew Fehr  
10/14 Stephen Glasmire, Tina Candelori, Kevin Greif, Justin Zabriskie  
10/15 Robert Pipech Jr.  
10/16 Avery Herrmann  
10/17 Joan Gouger, Frank Christman, Joseph Whiteway, Richard Nizolazzi, Jessica Kondratick, Nikolas Herrmann  
10/18 Jim Rohrman, Michael Moretz, Kevin Holmes, Michelle Beck, Lydia Buck, Logan Jacobson  
10/19 Mark Biery, Craig Hammerstone, Keith Davis, Charles Zielkowski  
10/20 Michael Zorn, Kristian Henriksen  
10/21 Wally Kowalew, Barry Sponsler, Maranda Hammerstone  
10/22 Bob Wright, Jay Caruso, Todd Greif, Natalie Arendt  
10/23 Gary DiBlasi, Amanda Pedraza, Daniel Armitage, Alex Candelori, Nicholas Jafraty,  
Bria Laree Pickel  
10/24 Steve Carroll, Ashley Horton, Steven Hancock  
10/25 Daniel Everett, Matthew Cameron, Nolan Klein  
10/26 Virgil Christman, Samantha Boyd  
10/27 Bransen Carroll  
10/28 Jessica Francis, Jessica Francis, Chelsea Buck  
10/29 Colleen Clark, Stephanie Arnold, Annie Garner, Allison Moretz, Kayla Smith  
10/30 Caroline Klein  
10/31 Mark Thomas, Jeff Lamberson, Jessica Greif, Jennifer Wimperis, Kailee Schmidt  
Jeff Lamberson

**Early November:**

- 11/02 Eli Serlenga, Cory Johnson  
11/03 Karen Ostyn, Emma Bush, Andrea Yetter  
11/04 Steven Rhoads, Meagan Garner  
11/05 Kenneth Edwards, Brenda Carool, Chris Daube,  
11/06 Zachary Elvin  
11/07 Tom Mulcahy, Natasha Edwards, Haley Zipp

## GOING TO SEED...

The October sky cannot lie  
as the clouds and time go floating by,  
and changing leaves on slender stems  
whisper "Autumn's here again".  
Acorns en-mass litter the ground  
to await next spring without a sound,  
resting on soil where they are received  
ready to sprout their root and leaves.  
Flaming pillars against deep blue sky  
the trees stand tall and wave good-bye,  
bursting forth with color that brings about sighing,  
strangely brightest when they are dying...  
Wild flowers are dozing snug in their beds  
dropping their petals and bowing their heads,  
giving thanks to their creator for meeting their needs  
while quietly going to seed.  
And they do so without a regret or a pain,  
for in dying to "self" they see their gain,  
and next year in the garden where there was just one,  
hundreds of them will smile at the sun.  
How simple, how easy, it all seems to be,  
to flourish, to wither and then go to seed,  
and they willingly do so again and again,  
because it simply is not about "them".  
The live and they grow and for a while they stand tall,  
full knowing their purpose and the ultimate goal,  
is to sprinkle their seed upon earthly sod,  
while giving all glory to God.  
And shouldn't we do the same as we go along?  
We are born, we grow up and we stand tall and strong,  
we bask in the glory of our own beauty and then,  
somehow we realize it's about HIM!  
In that moment we move forward into a new season,  
no more living for self, our life now has true reason.  
our focus has shifted from taking to giving,  
as we spread the seeds of our faith in our living.  
And when others take pause and look in our direction,  
It's God's light, not our own, that draws their attention,  
like the trees and the flowers that grow in the field,  
our purpose is to go to seed....

Cathy Wells

**Editors note:** Thank you for all your October submissions and Happy Fall Ya'll!

**I will be moving the newsletter deadline date to the 20<sup>th</sup> for November and December so put that in your memory bank some where**, because having the deadline two days before Thanks Giving or on Christmas Day simply will NOT do. And yes it will be here before we know it. My constant goal for this letter is to be informative and timely and to let people know all the great things going on here at Effort and how and when they can become involved. Feel free to contact me by phone at 610-381-4703 or by this email address [eumcwells@gmail.com](mailto:eumcwells@gmail.com). I appreciate your continued support in this ministry.

## **EUMC BUSINES DIRECTORY**

(Just minding our own businesses... Tee Hee Hee!)



Nita Nydam and Greg Magill 570-325-2903



Nita Nydam and Greg Magill 570-325-8109



Cathy Wells 610-381-4703

*Amy Boligitz*

*Mary Kay Independent Beauty Consultant*

45 Tumbleweed Dr  
Effort, PA 18330  
570-574-0596  
aboligitz@marykay.com  
www.marykay.com/aboligitz

Try before you buy! Book a FREE facial!  
Host a party and earn free products!

I know there are more businesses out there.... So why not put a business card in the mailbox at the church for future newsletter submissions and I will add them. Wouldn't it be nice to make a purchase from or hire someone you know and trust from your own church!!? We can even recommend a church members business to family or a neighbor once we know who does what. ;-)

What a great way to help out a fellow Christian in increasing their client base!

### *Music Together with Amy*

*Family Class Ages 0-5 with an adult*  
*Kids Only Class Ages 5-7*

**\*\*New Lower Prices\*\***

[www.musictogetherwithamy.com](http://www.musictogetherwithamy.com)

Contact Amy Boligitz

570-574-0596

[musictogetherwithamy@hotmail.com](mailto:musictogetherwithamy@hotmail.com)



## TAKE NOTE & PASS IT ON!

We pass on all kinds of things every day! Why not **PASS ON** your newsletter to someone who does NOT go to EUMC when you are done with it and have marked your calendar with the special dates! You could **send it on to your local email buddies** so they can see what we are up to or you could even **take your hard copy if you have it mailed to you and give it to a neighbor** who doesn't go to church. With each PASS IT ON you can attach a little invitation to an event that you would attend with them or even just suggest they come to a service with you. What a great way to bring new people into the family of Effort. Give it a whirl, it can only be good! ;-)



Looking for Quality Care for Your Children???  
You can find it at...

Effort United Methodist Church Day Care  
PO Box 545 Effort,  
Pennsylvania 18330

We are now accepting children from 6 Weeks Until Age 13. We are open year round (except for specific holidays from 6:00 am Until 6:30 pm. We proudly offer the Pennsylvania State Standards in Lesson Plans. Currently a STAR 2 level and follow Strict Guidelines for PA Keys and DPW  
Please Call (570) 629-5595 ext. 301 to Schedule a Visit!!! You and your child will be happy you did!



**NEW ADDRESSES!!!** Because of the 911 emergency system many of us are getting new addresses. Have you made the church office aware of your new address yet!? Please let the church office know so that the church records are accurate and up to date and we can mail the newsletter or any other mailings to the correct address. You can simply put it on a piece of paper and place it in the collection plate or call the church office. Thank you for your cooperation.

Take a few moments to visit our web site!

[www.effortumc.org](http://www.effortumc.org)

(you're gonna love it!)



## Easy Cheesie Pumpkin Peezy!

(I know, I know... it is supposed to be "easy cheesie lemon peezy" when something is easy, but it's pumpkin season and I could not help myself!) 😊

## Easy Pumpkin Muffins

**Prep Time: 5 Min**

**Cook Time: 25 Min**

**Ready In: 30 Min**

### Ingredients/ yeild

- 1 (18.25 ounce) package yellow cake mix
- 1 (15 ounce) can pumpkin puree
- 1 teaspoon ground cinnamon
- 1/2 teaspoon ground nutmeg
- 1/4 teaspoon ground cloves

**Directions :** Preheat the oven to 350 degrees F (175 degrees C). Grease a 12 cup muffin pan or line with paper liners. In a large bowl, mix together the cake mix, pumpkin puree, cinnamon, nutmeg and cloves until smooth. Spoon equal amounts of batter into the prepared muffin cups. Bake for 20 to 25 minutes in the preheated oven, until a toothpick inserted in the center of one comes out clean.

**(Can I get a YUM! YUM! YUMMY!? Oh, and a hot beverage to go!) Tee! Hee! Hee!**